

Empowering Women Leaders in Systems Engineering

What Success Looks Like

EWLSE's vision is to live in a world where women and men are equally represented as leaders in systems engineering.



Our mission is to create a systems engineering environment welcoming to all ■ promote the demonstrated value of women as systems engineers and leaders ■ engage women in engineering and systems engineering at all levels of education around the world ■ and enable increased participation and retention of women in systems engineering leadership.



The systems engineering environment is open to all

- Boundaries and partitions that limit success are removed
- Women are and know they can aspire to be leaders in systems engineering

All systems engineers are highly valued

- Diverse leadership styles are respected and included
- Systems engineering leadership reflects the community

Women and engineering go hand-in-hand

- At least half of graduating engineers are women
- Female engineering graduates choose an engineering career
- Women and men equally share technical leadership

We collaborate as equals

- Women and men have a seat at the table
- Cross-cultural collaboration is the norm
- We work together across domains to build a solution for all

Mentors and enablers are part of the culture

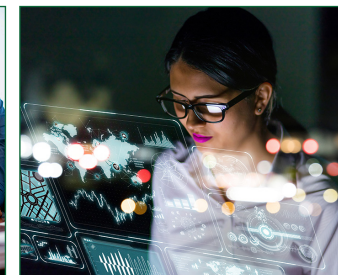
- Only knowledge, skills, abilities, and attitude matter
- Engagement at all levels of education
- Diversity is integral to the foundation



Join Us, there is work to be done



www.INCOSE.org/EWLSE
email: ewlse@incose.org



EWLSE Has a Place for You

Highlighting INCOSE Leadership

- Identify and pursue international opportunities
- Nominate and support women as board members, directors, chairs, fellows, pioneers
- Support INCOSE TLI members

Collaborating With Others

- Connect with academia
- Network across INCOSE sectors and chapters
- Reach out to other societies and groups

Building Mentor/Mentee Relationships

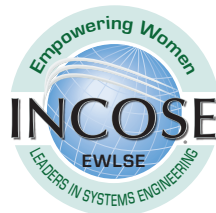
- Connect SE based mentors and mentees
- Support to women pursuing leadership roles
- Encourage pursuit of SE competencies

Celebrating Women

- Demonstrate impact of women in technical leadership
- Share success stories of empowered women
- Publish works that showcase women

Raising Awareness Through Research

- Advance related gender and diversity research
- Share research findings on status and progress
- Invite researchers to showcase their work



"Our diversity is not our problem. Our diversity is our promise."

Congressman Elijah Cummings

Ongoing Outreach for the Future

- Mentor systems engineering practitioners
- Raise awareness of diversity goals across INCOSE sponsored global events
- Support initiatives to build a better world through a systems approach
- Showcase people who are making a difference in the world
- Work to achieve gender parity in systems engineering leadership

EWLSE is part of INCOSE

To join INCOSE:

- Visit incose.org and select 'Join Us'

To join EWLSE:

- Log in and select 'Profile Home' under your name
- Select Browse/Join a Working Group
- Select 'View' for Empowering Women
- Go to the bottom, select "Join this Committee"



Current EWLSE Leaders